



# An Academy for South East Lincolnshire

Consultation on a proposed Academy sponsored by the University of Lincoln

# Content

- FOREWORD
- THE PROPOSALS
- NEXT STEPS
- OUR VISION FOR THE ACADEMY
- ACHIEVING THE VISION
- THE BUILDINGS
- CURRICULUM AND LEARNING
- TRANSITION TO AN ACADEMY
- WORKING WITH OTHERS
- ADMISSIONS
- HOW TO GET INVOLVED



# Foreword

We are delighted that the University has been given the opportunity to sponsor the proposed new Academy, which we believe will make a real difference to so many young people in the area. It will provide a truly excellent educational experience that caters for students' individual learning needs and encourages each and every one to excel through an innovative curriculum and inspirational teaching.

As part of the proposal we will, wherever possible, be working with the schools and wider communities to ensure that those who want to can play a valuable role in creating the new Academy.

We want you to be a part of the process that will shape the future of education in this area. We hope that you will respond to the questionnaire in this document and attend one of the consultation events we will be holding.

**Andrew Atherton**  
Senior Deputy Vice-Chancellor,  
University of Lincoln

When you read these proposals for the establishment of an Academy, I hope that you will share my own sense of excitement at the prospect of such a tremendous learning opportunity being provided for the young people in the area. I am absolutely delighted, on both a personal and professional level, to have been given the opportunity to lead its development.

The Academy will aim to provide the best possible educational opportunities and experiences, so that the full potential of every student is achieved. This in turn will enhance the life chances of students as they progress onto training, employment, further or higher education.

I would encourage you to contribute to the discussions, so that together we can develop this fantastic opportunity in the best interest of the younger and wider communities in the area.

I look forward to meeting you and having the opportunity to discuss the proposals.

**Steve Baragwanath**, Principal  
Designate of the Academy

## 1 What is an Academy?

Academies are all-ability, independent, state-funded schools, established and managed by sponsors from a wide range of backgrounds, including high performing educational providers. Like all other state-funded schools, Academies must comply with national rules for admissions, special educational needs and exclusions. However, Academies have greater curriculum freedom. They are required to follow the National Curriculum programmes of study in English, maths, science and ICT but have more flexibility about other aspects and can introduce forward-thinking ways of teaching and learning. Academies have independent governing bodies, accountable to the Academy sponsors and the Government.

The Department for Education (DfE) will fund the running costs of the proposed Academy at a level comparable to that of other specialist secondary schools. The Academy will manage its own budget and, like other schools, be free to raise additional funds to benefit the education of its students and the school community. The cost of new and refurbished buildings will be met by the Government.

## 2

# The Proposals

This document sets out details of the proposal to open a new Academy in Holbeach and Crowland, in September 2011, sponsored by The University of Lincoln.

The working title for the project is 'An Academy for South East Lincolnshire'. The final name will be decided following this consultation and we are keen to hear your views.

The Academy will provide 11-19 education for 1150 students, initially on the two sites of St Guthlac School and George Farmer Technology and Language College, ahead of a move

to the George Farmer site. This is in line with Lincolnshire County Council's proposals to close St Guthlac School and reorganise secondary provision in the area. The Academy will eventually admit up to 180 pupils to Year 7 and there will be a sixth form for 250 students.

The Academy will specialise in Science and Applied Learning, working in dynamic partnership with the University's National Food Manufacturing Centre, already adjacent to the George Farmer campus.

## Our vision for the Academy

Our vision is to create a world class Academy, which will provide the best learning opportunities for young people in South East Lincolnshire.

The Academy will be an education hub that works in a dynamic partnership with the University of Lincoln, which already has a campus situated adjacent to George Farmer Technology and Language College. The evolving partnership between the Academy and the University will play a major role in raising aspirations amongst young people in the area. It will widen and strengthen the learning opportunities available to students at the Academy and enhance their ability to progress into Higher and Further education.

Over time, the University will also seek to develop additional science and engineering based facilities that will support students' learning in these areas and provide training support for a wide range of local and national industries.

The Academy will develop a broad and balanced curriculum with more opportunities to study specialist Technology, Science and Applied subjects. These aims will be delivered through:

- ▶ £8.24 million of investment to support the development of new Academy buildings that will create vibrant classrooms at the Holbeach site
- ▶ New and refurbished science laboratories
- ▶ New and refurbished workshops for technology subjects
- ▶ Much improved sports facilities which will include planned community use out of school hours

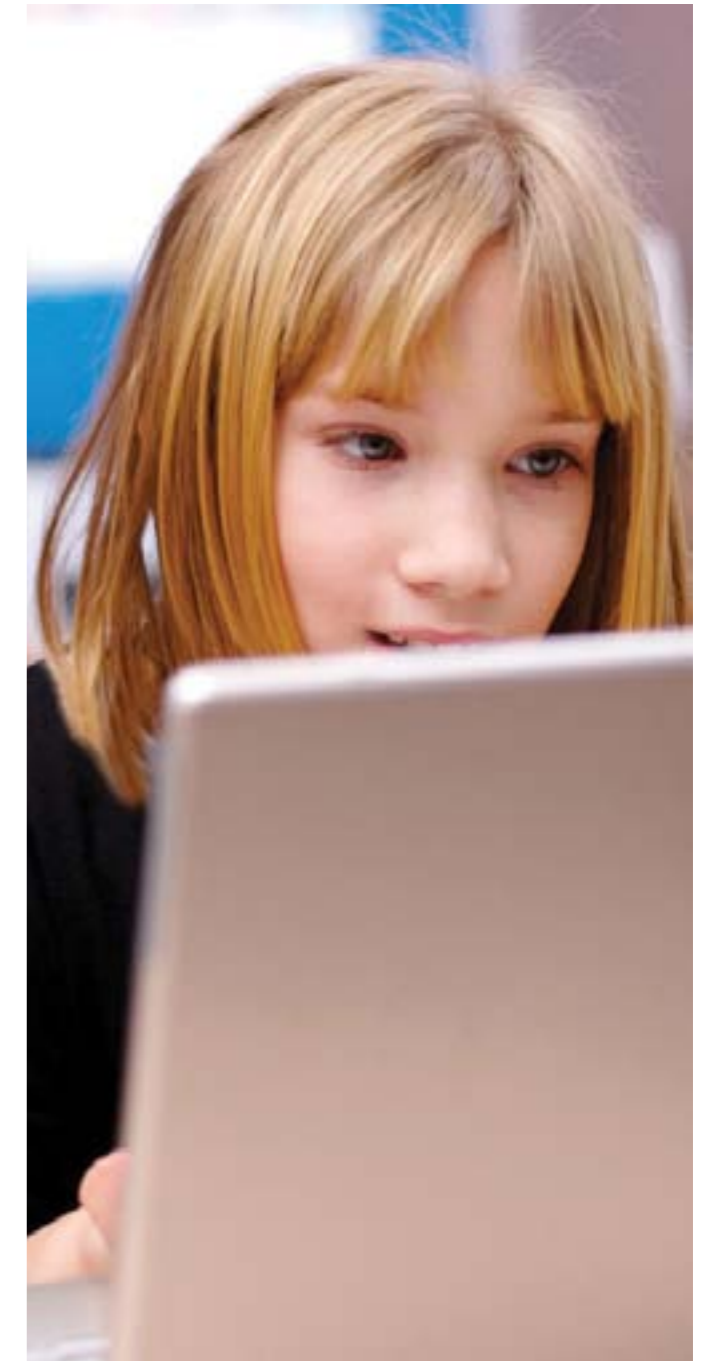
### 3 Next steps - your views

The sponsor, The University of Lincoln, is keen to hear from parents, carers, students, staff and local people about what kind of Academy should be created.

This document describes some of the exciting proposals for the proposed Academy. We have the opportunity to create something very special for students and the community. We want to hear your views on these proposals and your ideas on what else the Academy should provide for the future education of learners in the area. We will take this feedback and use it to improve the proposals for the Academy.

The consultation on the new Academy proposals is being undertaken by Appleyards\* on behalf of The University of Lincoln and the Department for Education.

*\* Appleyards is an education and project management company appointed to help set up the proposed Academy. It has successfully supported the establishment of other Academies across Lincolnshire and the country.*



- ▶ The opportunity to study separate (triple) Science at GCSE, making it easier for young people to progress onto further, more specialist science study in the sixth form
- ▶ A wide range of Technology subjects, with Double Science and Design Technology for all pupils (Food Technology, Resistant Materials, Textiles and Graphics available to all)
- ▶ Expansion of our innovative school-based apprenticeships programme operating across many local industries and trades
- ▶ Full coverage, at GCSE level, of the five subjects (English, Maths, Science, Modern Foreign Language, History and Geography) that enable pupils to benefit properly from the new English Baccalaureate qualification
- ▶ Innovative use of new technologies to improve access to learning resources, allowing any time learning
- ▶ High profile intervention programmes in Years 7 to 9 to help students make rapid improvements in English and Mathematics as soon as they enter the Academy. This will make extensive use of new technology and individual support
- ▶ An improved sixth form subject offer that includes a wide range of practical subjects that have high quality employment and work experience links
- ▶ A new range of A-level courses to support an academic route into Higher Education and stretch the most academically able
- ▶ A choice of courses and subjects that are all designed with clear and planned progression routes into Higher Education, Further Education and Apprenticeships or employment
- ▶ High quality Information, Advice and Guidance (careers advice) to inform subject choices and make sure that any qualifications gained match the youngsters' learning ambitions and support progression into their chosen career or area of further study
- ▶ Early experiences of Higher Education to help more students progress on to University. This will be supported through the close partnership with the University of Lincoln and new approaches to study, such as early access and accreditation to Higher Education modules for sixth form students
- ▶ A centre of excellence for 'Land Based Industries' that makes use of the University's flagship National Food Manufacturing Centre which is adjacent to the proposed academy.



- ▶ Improved safety for students – the new and refurbished buildings will be designed with security as a key feature
- ▶ An extensive range of after school activities, including Duke of Edinburgh Award Scheme, cadets, sports clubs, revision sessions, drama and music, after school homework supervision and many others. The consultation is an opportunity to explore other opportunities and further community links
- ▶ A system of pastoral care that values individuals, that is centred round tutor teams and learning coordinators who will know each student

## Curriculum and learning

The Academy's approach to the subjects that students study will be inclusive. It will give students of all abilities the support needed to enable them to achieve their full potential. A personalised learning agenda, together with excellent assessment practices, will ensure all students make good progress.

The key focus will be to increase literacy and numeracy standards, thereby providing firm ground for raising overall academic standards. The Academy will provide high quality learning across Key Stages 3 and 4 in the five core national curriculum subject areas that will enable them to attain the proposed English Baccalaureate.

This will mean the majority of students will eventually study GCSEs in English, Mathematics, Double or Triple Science, a Humanities subject (Geography or History) and a Modern Foreign Language (French or Spanish). The rest of their learning time will include two hours of Physical Education, Information and Communications Technology and a Personal Health and Social Education Programme (PHSE). Students will have the opportunity to personalise their learning by taking two subjects from a wide range of GCSE and applied learning options.

The evolving Post 16 curriculum will include access to diplomas and vocational opportunities such as innovative school-based apprenticeships. In addition, students will be able to study traditional A-level courses, or a combination of both. This broad offer is designed to support a wide range of learning styles and help as many students as possible progress beyond 19.

Throughout, the focus on personalised learning and achievement will be underpinned by high quality pastoral support, information and guidance at each key stage. As well as this, a team of specialist teachers will lead the learning of students with special educational needs. A special needs department will provide specific support in both mainstream and specialist lessons.

The proposed Academy will specialise in Science and Applied Learning. These subject specialisms will compliment the University's areas of expertise and the mix of industries in the local economy. This choice of specialist subjects provides essential curriculum breadth and relevance, and contributes to the culture of high aspirations, encouraging pupils to take responsibility for their own learning.

## Meeting the needs of all students

An inclusive educational approach will support the development of the 'whole' child. Our aim is to ensure that all children, whatever their learning needs and background are successful. We will work with a range of agencies to promote the well being of all children.

Personalisation of learning will be founded on ongoing assessment, clear guidance and realistic planning, using technology, accompanied by ongoing recording, reporting and timely intervention, to promote and sustain student progress.

Parents and carers will be encouraged to be full partners in students' learning through timely and appropriate two-way

communication with the Academy. The Academy will be committed to a strong student voice that will include an active student council.

We will develop volunteer mentoring, 'buddying' and schemes that build on the potential close links with the sponsor and partner student bodies. Students will be encouraged to take an active role in the community and undertake voluntary work. The Academy's extended day will offer increased opportunities for enrichment activities and supported learning, as well as widening extra-curricular opportunities.

## The buildings

We aspire to having fantastic facilities to match our educational vision. The environment will excite learners and all who work in it and demonstrate the value that the Academy has for its students and staff.

We have received confirmation that, should the Academy proposal be agreed, £8m will be made available for improving the current facilities at the George Farmer Technology and Language College site. The final facilities will need to be flexible and adaptable for a rapidly changing education

system, where ICT in particular enables a rich 'anytime-anywhere' learning experience. No plans have been drawn up as yet and we will aim to fully involve students, staff and the community in the development of our capital plans.

During the construction period, the school and building site will be completely separate and disruption will be kept to a minimum. Education provision will continue as usual, and in addition, we will be exploring shared use of the adjacent University facilities to further broaden the Academy's curriculum.



## 7 Transition to an Academy

- ▶ In September 2011 the new intake to the Academy in Year 7 will begin across both sites. Those children offered places at St Guthlac School and George Farmer Technology and Language College will attend the respective sites of the former schools.
- ▶ A uniform grant will be provided for all current members of the schools who transfer to the Academy on its opening.
- ▶ The current proposal is for use of the St Guthlac site to be ended after two years. This has not been formally decided at this point and any proposals will be discussed with the members and stakeholders of the two sites. We are keen to hear your views on the proposal.
- ▶ Starting in September 2013 all students will attend the Academy on the Holbeach site.
- ▶ The Academy's refurbishment and capital works are due to be completed by September 2013.

## Working with others

### Links with partner Primary Schools

There has been much good practice developed by the existing schools which the Academy intends to build on. The Academy will develop exceptionally good links with partner primary schools, focusing on the core curriculum to ensure transition to the Academy is as smooth as it can be and giving students the best possible start in Year 7. Staff in other subjects will liaise with subject coordinators in primary schools to share good practice and bring about further development and improvement.

### Links with The University of Lincoln

A particular strength will be the links between the Academy and its sponsor, The University of Lincoln. University resources will be used to support the Academy in relevant and demonstrable ways. The sponsor will help define an innovative curriculum, informed by its Centre for Educational Research and Development, with new approaches to pedagogy and improved staff development. Innovative approaches such as access to Higher Education modules and accreditation in Years 12 and 13 will further improve progression to Higher Education.

### Links with local business, Lincolnshire County Council and other local Secondary Schools

Partnerships make all the difference in the 14-19 curriculum and the Academy will work with Higher and Further Education, in particular The University of Lincoln as sponsor, in order to provide the best opportunities for our most able students. Collaborative partnerships with local businesses such as QV Foods, Taylors Bulbs and Wye Plants, will help to provide high quality employment and work experience links for the new Academy.

### Links with the community

The Academy will encourage community use of its facilities and will support members of the community in accessing lifelong learning opportunities utilising the vocational/applied and other specialist facilities. Community use of the sports facilities will be encouraged and we will work in partnership with the local Council in order to enable out-of-hours use. We will also aim to build on George Farmers' 'International School Status' by developing wider national and international community links to support cultural and citizenship curriculum developments.



# Admissions

## Home to School Transport

If St Guthlac School becomes part of the proposed new Academy in September 2011, then all children on roll at The St Guthlac School who are entitled to transport (including the September 2011 Year 7 intake) will continue to have transport provided to the Crowland site, in line with current transport policy.

If the St Guthlac's site were to close in the future then all children on roll at that time, would qualify for transport to the Academy site in Holbeach, where they would be offered a place if they wish to go there. They would be provided with transport through to finishing Year 11 by the Local Authority.

If they did not wish to transfer to the Holbeach site then they will qualify for transport to the nearest, or designated, school to their home address under the current transport policy. The designated transport area (DTA) for St Guthlac would be split between The Deepings, Spalding and Holbeach based on distance to respective schools. Students residing in the new DTAs would be provided with transport accordingly. The town of Crowland itself would come within the DTA for The Deepings Schools and secondary-age children would be entitled to school transport to The Deepings, subject to meeting the distance and other criteria for home to school transport.

The proposed Academy would admit girls and boys of all backgrounds, aptitudes, abilities and faiths. There would be up to 900, 11-16 year old students and 250, 16-19 year old students places, with no selection by ability. The Published Admissions Number would be for up to 180 students per year group.

The Academy Trust will be responsible for admissions, which will be consistent with the Code of Practice on Admissions and similar to those in place at St Guthlac School and George Farmer Technology and Language College.

All current students at St Guthlac School and George Farmer Technology and Language College, and those due to start in Year 7 at these schools in September 2011, will automatically transfer to the new Academy should it be approved for opening.

From 2012, the Academy will take up to 180 students in Year 7 (its Published Admission Number).

The Academy Trust will first accept all pupils with a statutory right to a place at the Academy through a statement of special educational needs naming the Academy.

If the new Academy were oversubscribed, after the admission of pupils with statements of SEN where the Academy has agreed to be named on the statement, the criteria will be applied in the order in which they are set out below:

- A. The child is in the care of the local authority.
- B. There is a brother or sister at the school who will still be attending when the child is due to start.
- C. A child living within the combined area of the parishes of (in no order of priority) Holbeach, Fleet, Whaplode, and Crowland
- D. The driving distance from the home to the school, as measured by the Local Authority school admissions team, with the child living nearer the school having priority. This will be the tie-breaker if necessary

The Academy is committed to ensuring that the ongoing needs of both communities served by St Guthlac School and George Farmer Technology and Language College are represented when reviewing the Academy's admissions policy annually. We will be seeking views on this as part of this consultation and in the future.

# How to get involved

The consultation process is your chance to contribute to the discussion.

Consultation meetings will be held at the two schools for students and staff at the current St Guthlac School and George Farmer Technology and Language College. At these meetings representatives of the sponsor will present the developing proposals for the design and running of the Academy.

## Public meeting

We will also be holding an open meeting for parents and the public from 6.30 to 8.30pm on Wednesday 11 May 2011, in the Marquee Room at the Springfield Events Centre in Spalding.

There will be plenty of opportunities to ask questions and to give your views to contribute to the planning process. Notes of the meetings will be taken and the views expressed will be recorded and considered by the sponsor and Department for Education in the further development of

the proposals.

## How to make your views known

You can give your views on the proposals in writing, or by email. All written views will be independently recorded, but may be edited for inclusion in the consultation report.

You may wish to use the questionnaire that accompanies this document or complete the questionnaire online at [www.holbeachacademy.org](http://www.holbeachacademy.org).

Alternatively please email your views to [info@holbeachacademy.org](mailto:info@holbeachacademy.org).

# An Academy for South East Lincolnshire CONSULTATION QUESTIONNAIRE

A new 11-19 Academy is proposed to replace George Farmer Technology and Language College and St Guthlac School in September 2011. We would like to know your views about the Academy and how you think education could best be provided. This questionnaire can also be downloaded or completed online at [www.holbeachacademy.org](http://www.holbeachacademy.org). Please complete and return your questionnaire by 20 May 2011.

## Section 1: WHO YOU ARE

Please tick one or more boxes as appropriate in any of the sections below:

- Student at George Farmer Technology and Language College
- Student at St Guthlac School
- Student at a local primary/junior/infant school
- Student at another local secondary school
- Parent/carer of a student at George Farmer Technology and Language College
- Parent/carer of a student at St Guthlac School
- Parent/carer of a student at a local primary/junior/infant school
- Parent/carer of a student at another local secondary school
- Member of staff at George Farmer Technology and Language College
- Member of staff at St Guthlac School
- Member of staff at a local primary/junior/infant school
- Member of staff at another local secondary school
- Governor of George Farmer Technology and Language College/ St Guthlac School
- Governor of local primary/junior/infant school
- Governor of another local secondary school
- Someone else with an interest in the proposal. Please state your interest or connection:

tear along line to detach questionnaire

## Section 2: FEATURES OF THE ACADEMY

It is proposed that the Academy will focus on a number of key areas of teaching and learning to improve students' educational experience. On a scale of 1 to 5, where 1 is most important and 5 is least important; please indicate how important you think each feature is:

- a. The Science and Applied Learning specialisms
- b. A 'personalised learning' agenda for every student
- c. Enhanced progression routes to apprenticeships, Further and Higher education
- d. High quality employment and work experience links
- e. High profile intervention to improve attainment in English and Maths
- f. Strong involvement of parents
- g. Close working with local primary schools

## Section 3: BENEFITS TO THE COMMUNITY

To what extent do you feel the proposed Academy's facilities should be available for community use?

- Very much  To Some extent  Not very much  
 Not at all  Don't know

Are there any particular activities that you would like to see at the Academy, for example, evening use of facilities or access to sports and ICT areas?

Section 4: ADMISSIONS

Do you agree with the admissions arrangements as set out in the consultation document?

- Very much  To Some extent  Not very much  
 Not at all  Don't know

Do you have any further views on how you would wish to see the Academy handle its admissions in the future?

Section 5: THE NAME OF THE ACADEMY

We are consulting on the name of the Academy, please indicate your preference for the names below:

- The Holbeach Academy  
 The South Lincolnshire University Academy  
 The Lincolnshire Fens Academy  
 The South Holland Academy

Alternatively, please suggest a different name for the Academy below:

Section 6: OVERALL ARRANGEMENTS

Overall, to what extent are you in favour of the proposals for the Academy as set out in the consultation document?

- Very much  To Some extent  Not very much  
 Not at all  Don't know

Comments:

Section 7: FOR PROSPECTIVE PARENTS ONLY

1. The Academy will initially be based on two sites at St Guthlac and George Farmer, would you like the option for your child to start at the George Farmer site in September 2011?

- Yes  No  Don't know

2. How interested are you in sending your child/children to the Academy?

- Very interested  Interested to some extent  
 Not very interested  Not interested at all  Don't know

Section 8: Please use this space to give any further comments you have on the Academy:

Thank you for taking the time to complete this questionnaire. Please return it, along with any other views you may wish to contribute, to: Appleyards, Tubs Hill House, London Road, Sevenoaks, Kent, TN13 1BL Email: [info@holbeachacademy.org](mailto:info@holbeachacademy.org) or fill in the questionnaire online at [www.holbeachacademy.org](http://www.holbeachacademy.org). The closing date for responses is 20 May 2011.



# An Academy for South East Lincolnshire

[www.holbeachacademy.org](http://www.holbeachacademy.org)